



INSTALLATION GUIDE

BRUSHRAIL & STEPS – FORD F450



NOTE: This product has been tested for air bag compatibility and therefore the mounting system MUST NOT be modified

IMPORTANT: Bullbar installations should only be done by a qualified person and it is the responsibility of this person to ensure correct fitment.

Read Fitting instructions carefully before fitting product to vehicle

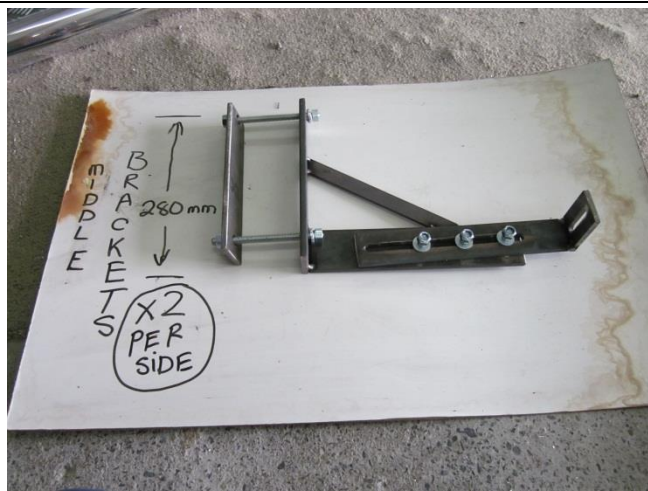
- ❖ When installed in accordance with these instructions, the front protection bar does not affect operation of the srs airbag
- ❖ this product must be installed exactly as per these instructions using only the parts supplied
- ❖ in the event of damage to any bullbar component, contact the tuff team ASAP
- ❖ do not use this product for any vehicle make or model, other than those specified by tuff
- ❖ do not remove any labels from the bullbar or brush rails & steps

FITTING KIT BRUSHRAIL & STEPS

D/Cab	
12	150mm x 12mm Threaded Rod
24	12mm Nuts
24	12mm Spring Washers
32	40mm x 10mm Bolts
64	10mm Flat Washers
32	10mm Nylock Nuts
6	Chassis Backing Plates
8	Chassis brackets
8	Extension Brackets



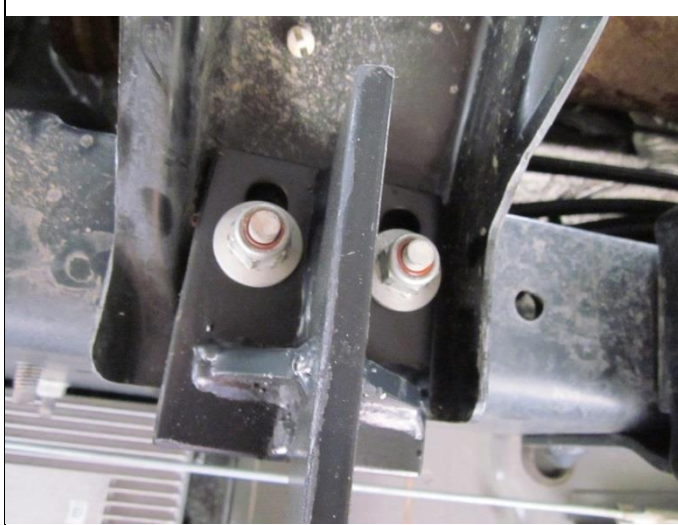
Front brackets left and right



Middle bracket left and right



Back bracket left and right



Attach front bracket to gear box cross member as shown in the picture.



Middle and back bracket attached to chassis with threaded rod top and bottom, 50 x 10 x 200mm backing plate creating a 'u' bolt around the chassis. Then attach I shape bracket as shown in picture to chassis brackets.



Attach rail or step to I shape bracket as shown in picture and tighten



Set to desired height on vehicle.



Completed side steps