



# INSTALLATION GUIDE

## BULLBAR – FORD F450



**NOTE: This product has been tested for air bag compatibility and therefore the mounting system MUST NOT be modified**

**IMPORTANT: Bullbar installations should only be done by a qualified person and it is the responsibility of this person to ensure correct fitment.**

# Read Fitting instructions carefully before fitting product to vehicle

- ❖ When installed in accordance with these instructions, the front protection bar does not affect operation of the srs airbag
- ❖ This product must be installed exactly as per these instructions using only the parts supplied
- ❖ In the event of damage to any bullbar component, contact the tuff team ASAP
- ❖ Do not use this product for any vehicle make or model, other than those specified by tuff
- ❖ Do not remove any lables from the bullbar or brush rails & steps

## **FITTING KIT BULLBAR**

12	12mm Nylock Nuts
24	12mm Flat Washers
2	40mm x 10mm bolts
2	50mm x 10mm bolts
12	50mm x 12mm bolts
8	10mm Flat washers
4	10mm Nylock Nuts
3	Teck Screws
10	3 / 16 x 1'' Bolt & Nuts
2	Stabiliser Brackets
2	Bullbar brackets
2	7'' rubbers
2	Indicator Leads
6	Wire Tap Connectors
2	Brytec Indicators

## **Ensure Number plate is Clearly Visible**

Please note when fitting / refitting the number plate to the vehicle, ensure that it is clearly visible accordance with local laws. Use the number plate mount if fitted.





**Remove front bumper**

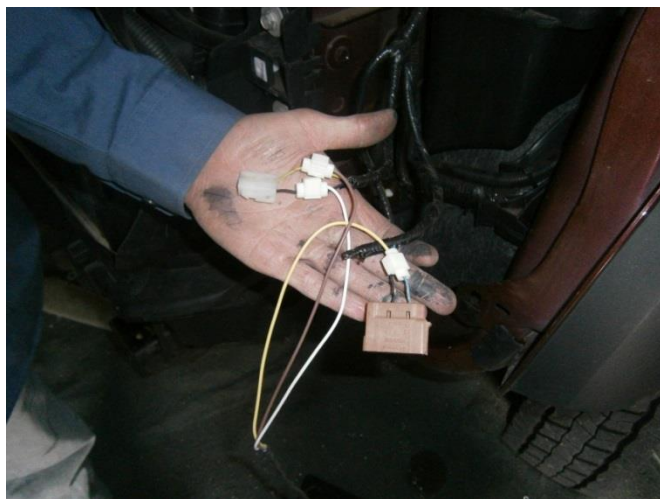


**Remove tow eye bolts**

**Remove grill**



**Remove head light to gain access to wiring harness to attach indicator park light leads**



**Connect the wiring kit supplied to wiring harness using wire taps & solder wiring goes under & behind headlights**

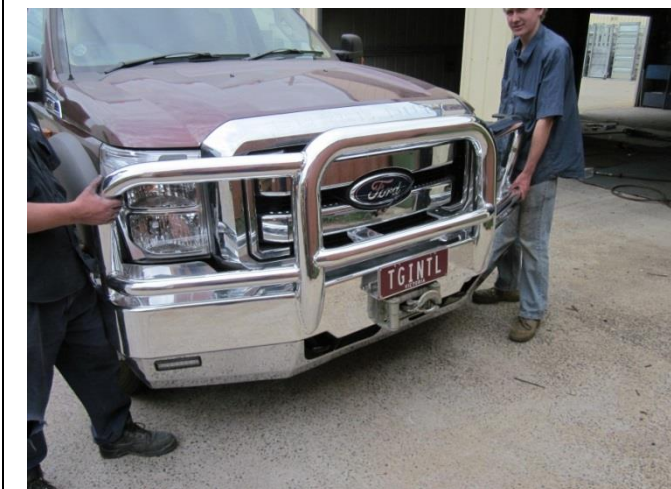
**tip: try out led lights before you fit  
bulbar  
yellow = indicator  
white = earth  
black = park**



**Attach indicator to indicator lead fitted**



**Fit bracket to end of chassis rail using the bolts provided. also ensuring the tow eyes are attached to tag provided on bracket**



**Place bullbar onto the brackets. bolt it up loosely with washers and 12 mm nuts. align the bullbar left and right and make sure that the wings follow the line of the vehicle. tighten all bolts**

**Tip: Tightening the bottom bolts moves the wing of the bullbar upwards. tightening the top bolt moves the wing down  
make sure bolts are tight**



**Fit number plate and indicator/park lights – connect lights into wiring harness**

**Use 3mm bolts and nuts supplied**

## **PARK LIGHT & INDICATOR DIAGRAM**

