



## **PLEASE REMOVE FROM FITTING INSTRUCTIONS AND PUT IN THE GLOVE BOX OF THE CLIENTS VEHICLE**



### **Your TUFFbar complies with all current Australia standards**

Thank you for purchasing a TUFF Bullbar to protect you, your family and your investment. The purpose of a good bullbar is to prevent/reduce damage to the front of the vehicle in the event of an accident, collision or animal strike.

#### **Manufacturing of TUFFbars**

To ensure a TUFF bullbar properly serves its purpose, the design and engineering team at TUFF, take a number of factors into consideration, such as; crush rate, air bag deployment, reflection, profile, airflow and accessory fitment just to name a few.

The shape and dimensions of a bullbar strongly influence the degree of protection offered to other road users too. TUFFbars follow the profile of the vehicle and when fitting the bullbar, we ensure that the width of the vehicle is not exceeded.

#### **What requirements are needed to meet to comply with current Australia standards**

After the bullbar has been fitted you can be assured that TUFF Bullbars comply with the Australia Standard Guidelines and relevant Australian Design Rules (ADR's). Main requirements include:

1. Airbag Compatible,
2. Posts do not lean forward,
3. Indicator/Park lights fitted to bullbar,
4. Rounded Corners,
5. Rounded tubes to outside stays,
6. Radius Edges,
7. All UHF Aerials/Spotlights are mounted behind the forward face of the bullbar.
8. The bullbar is manufactured by a reputable and responsible manufacturer.



## FITTING INSTRUCTIONS FOR TOYOTA LAND CRUISER 70 SERIES BULLBAR

A bullbar mounting system is the most important part of any design, and as every vehicle is different, our TUFF Heavy duty steel mounting systems are designed specifically to suit the vehicles chassis and the bullbar bolting onto it. All TUFF mounts are cut from 8 – 10mm steel plate and are designed and independently tested to ensure they are compatible with the vehicles standard safety equipment, without compromising the strength and performance of the TUFFbar. TUFFbars meet the requirements of ADR 69/00

Vehicle Frontal Protection System Impact Test – Air Bag Compatibility Certificates are available on request.

\*Pictured TUFF Heavy Duty Mounting system



The front face of a TUFFbar has been carefully designed to ensure that it does not lean outward from the vehicle. Aerial tabs and driving light mounts are fixed to the bullbar in a manner that prevents them from becoming dangerous projections. All accessory fixtures are positioned on the rear of all TUFFbars.

\*Pictured an example of accessory fixtures positioned to the rear surface



The ends of TUFFbars are curved to wrap around the front of the vehicle. They do not protrude beyond the legal maximum width of the vehicle. The overall height of a TUFFbar has been designed to be practical and protective. Bars extending too high over the bonnet are not permitted.

\*Pictured TUFFbar ends curved to wrap around the profile



Research conducted by insurance companies and the 4WD industry show that the cost of repairing vehicles due to animal-related collisions, run into the millions of dollars across Australia annually. Therefore, protecting your investment with a TUFFbar provides you with the **ULTIMATE** Protection for you and your family, and assists with reducing insurance claims and premiums.

We are proud of our products and the superior protection they offer. Further product information relating to compliance and safety, can be obtained by contacting 1300 BE TUFF (1300 23 8833).

TUFF looks forward to protecting you!

**Anton Griffiths**

Managing Director

1300 23 8833

6 Tews Ct (PO Box 1977)

Toowoomba QLD 4350



## FITTING INSTRUCTIONS FOR TOYOTA LAND CRUISER 70 SERIES BULLBAR

TUFF BULLBARS AUSTRALIA,  
6 Tews Ct, (P.O. Box 1977)  
Torrington,  
Toowoomba,  
Queensland 4350,  
AUSTRALIA



Ph: **1300 BE TUFF** (1300 23 88 33)  
Fax: 07 4633 1236  
[sales@tuffbullbars.com.au](mailto:sales@tuffbullbars.com.au)  
[admin@tuffbullbars.com.au](mailto:admin@tuffbullbars.com.au)  
[feedback@tuffbullbars.com.au](mailto:feedback@tuffbullbars.com.au)  
[www.tuffbullbars.com.au](http://www.tuffbullbars.com.au)

## TOYOTA LAND CRUISER 70 SERIES BULLBAR - BOLT & BRACKET KIT

6	30mm x 10mm 1.25 fine thread bolts
2	40mm x 10mm 1.25 fine thread bolts
16	10mm flat washers
8	10mm spring washers
2	50mm x 50mm square plates
2	12mm x 130mm bolts
4	12mm flat washers
2	12mm Nylock Nuts
4	10mm Nylock Nuts
4	50mm x 10mm bolts
2	3/16" bolts & nuts
2	Bullbar Brackets
2	Indicators (brytec)
2	Indicator leads
6	Wire tap connectors
2	400mm RHS stabilisers

[www.tuffbullbars.com.au](http://www.tuffbullbars.com.au)

**1300 BE TUFF**

**TUFF BY NAME \* TUFF BY NATURE**

**AUSTRALIA'S LEADING BULLBAR  
MANUFACTURER**





## FITTING INSTRUCTIONS FOR TOYOTA LAND CRUISER 70 SERIES BULLBAR



Remove Bumper



Remove Steel Bumper Support



Connect Wiring Kit into wiring (Go under & behind Headlights) Use Wire Taps or Solder

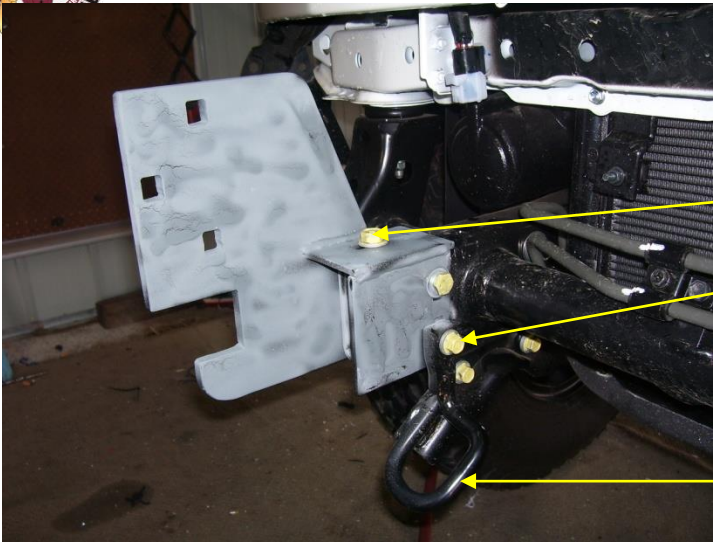
**YELLOW = INDICATOR**

**WHITE = EARTH**

**BLACK = PARK**



## FITTING INSTRUCTIONS FOR TOYOTA LAND CRUISER 70 SERIES BULLBAR



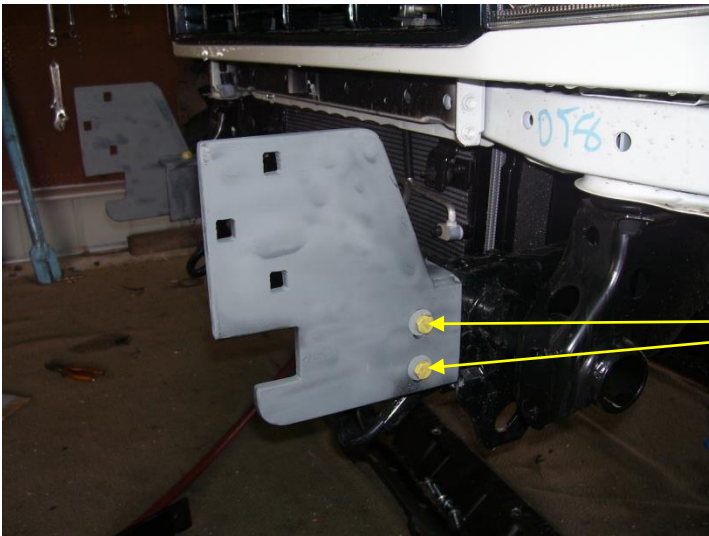
Attach Brackets to Chassis

Three 10 x 30 &

One 12 x 130 Bolts each side

One 10 x 40 Bolts

Loosen Tow Bracket Before  
Fitting Bracket



30 x 10

\* As Shown In Pictures



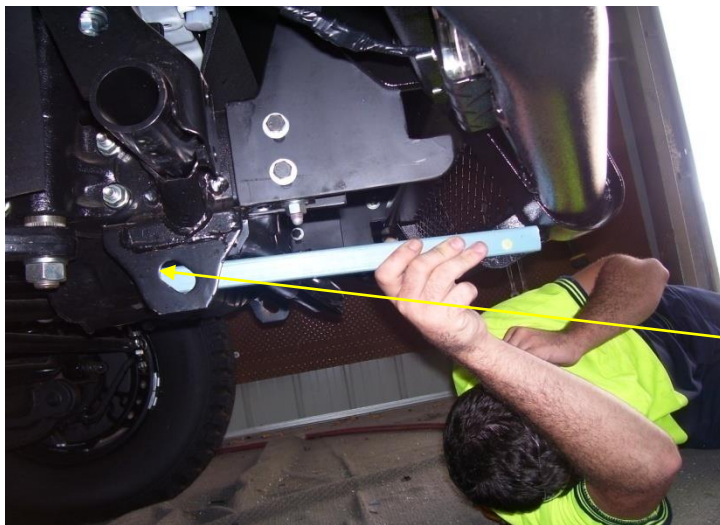
## FITTING INSTRUCTIONS FOR TOYOTA LAND CRUISER 70 SERIES BULLBAR



Fit Bullbar to Brackets – Level and Tighten With Six 12 x 50 Bolts (3 Each Side)

Tip: Tighten One Middle Bolt on Each Side Then Set Level and Tighten the rest

A+/- 40mm Gap between Bullbar and Guard Is Normal



Connect 25 x 25 RHS Stabiliser Rod between Bullbar and Bracket As Shown

Holes in RHS Will Have To be Marked and Drilled

Use Two 10 x 50 Bolts, Nuts & Washers. The Square Alloy Washer Goes to the Large hole Side

Make Sure This Hole Is Marked Towards the Back of the Hole



Connect & Fit Indicator Lights and Number Plate

Use 3/16 x 1 Nuts & Bolts

PLEASE DON'T HESITATE TO CALL US ON **1300 BE TUFF** (1300 23 88 33)  
IF YOU HAVE ANY PROBLEMS WITH FITTING  
BEST REGARDS THE TUFF TEAM! 😊